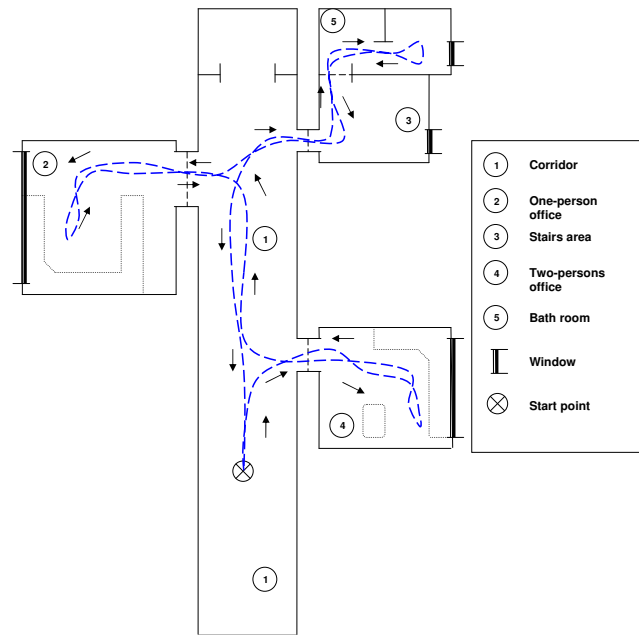


Part A

- ① Printer area
- ② Corridor
- ③ Kitchen
- ④ Large office
- ⑤ Two-persons office 1
- ⑥ Two-persons Office 2
- ⑦ One-person Office
- ⑧ Bath room
- ⑨ Stairs area
- ▮ Window
- ⊗ Start point



Part B

- ① Corridor
- ② One-person office
- ③ Stairs area
- ④ Two-persons office
- ⑤ Bath room
- ▮ Window
- ⊗ Start point

Maps of the two parts of the laboratory in Freiburg with approximate paths followed by the robot during data acquisition. The standard path is represented with blue dashes and the extended path is represented with red dashes. Arrows indicate the direction in which the robot was driving.